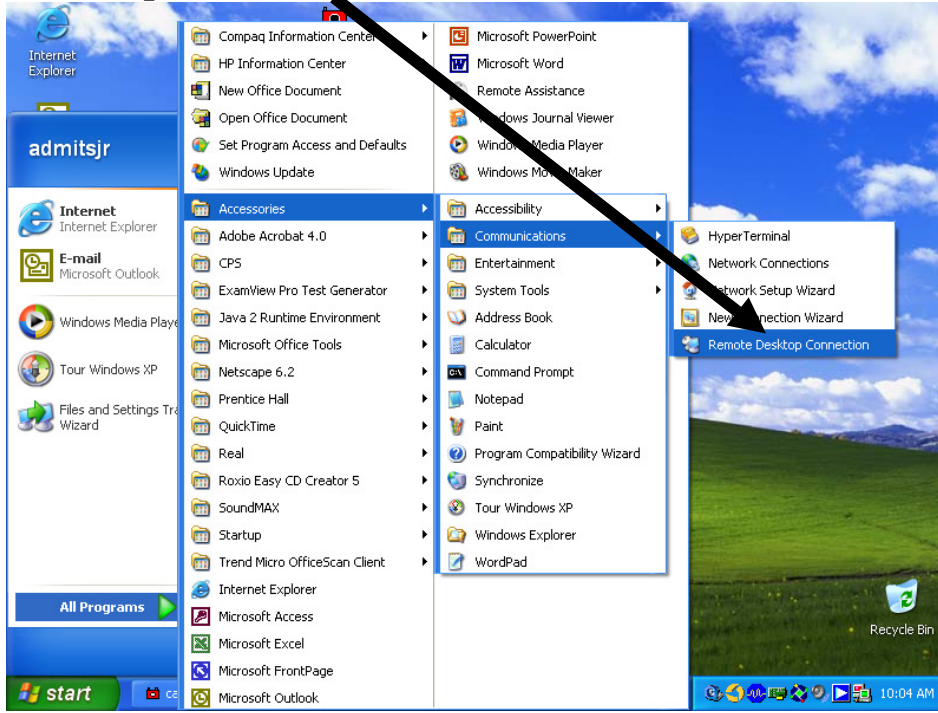


# Connecting Remotely to Your A/V Cart

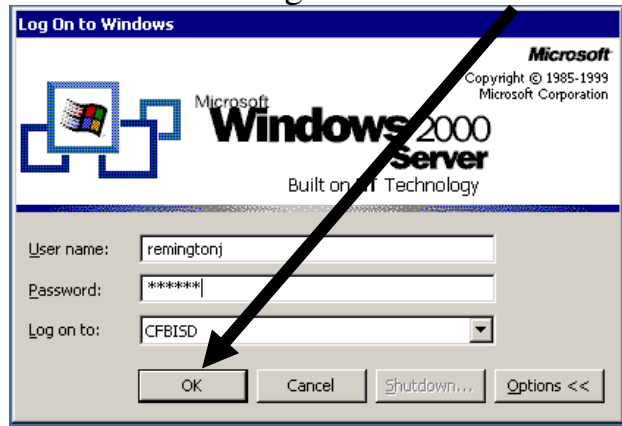
1. Go to Start> Programs> Accessories> Communications> click on Remote Desktop Connection.



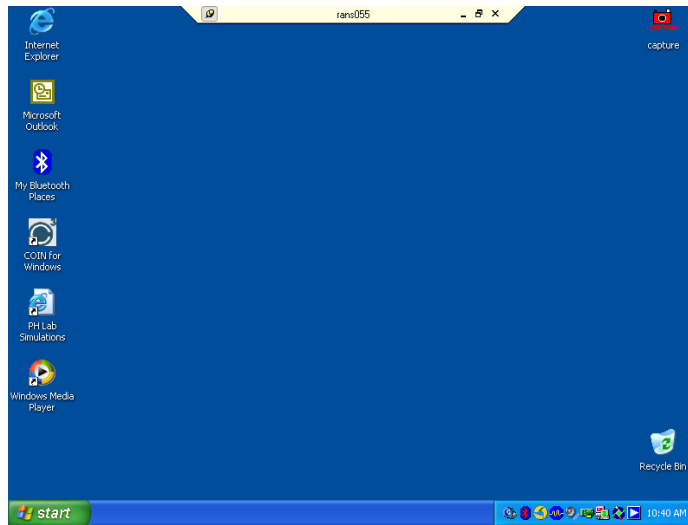
2. Type the node number of your cart and click connect.



3. Type in your usual teacher login and click OK.



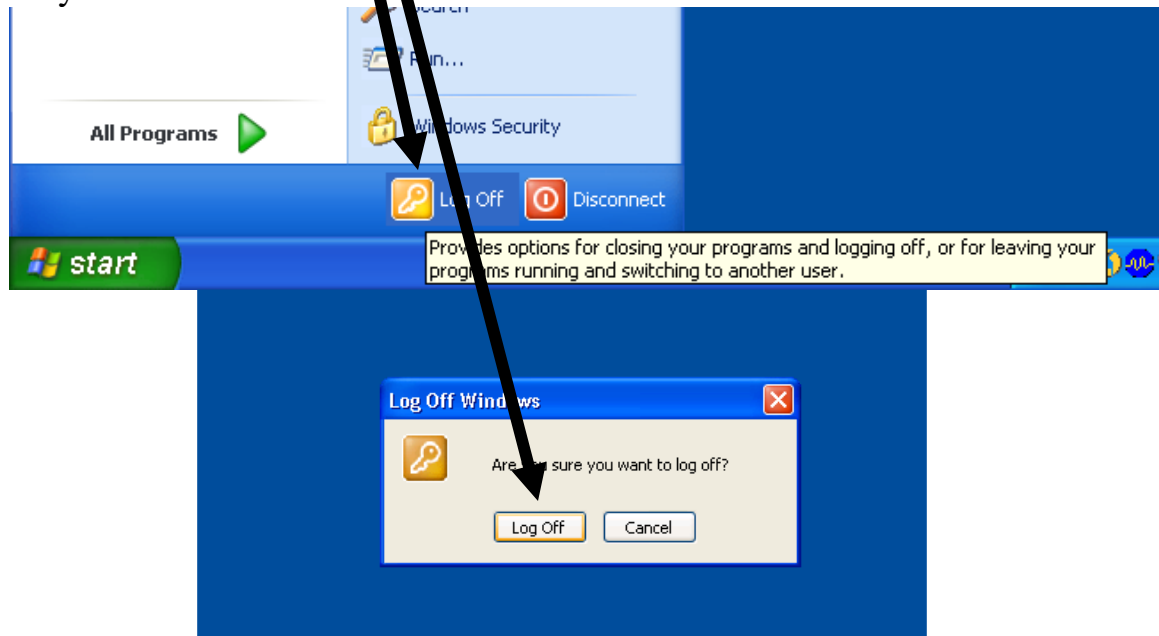
4. The desktop of your cart will appear **just as if** you were physically on it.



You may work exactly the same way as you do when you are physically on your cart.

## **Cautions**

1. Remember that you are not physically on your cart!
2. **You must click log off** the remote desktop to disconnect from your cart.



Do not disconnect in any other way or you may be unable to shut your cart down.

