

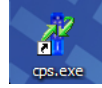
# IR Receiver Detection Instructions

You will need to repeat these steps if you unplug and re-plug your receiver

## Detect IR Receiver

1) Plug your receiver into a USB port in the back of your computer

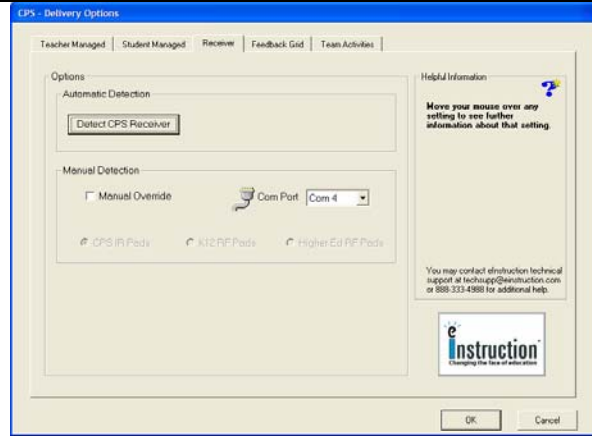
2) Open CPS from your desktop icon →



3) Click **Settings** on menu bar and choose **Delivery Options**

4) Click the **Receiver** tab

5) Click **Detect CPS Receiver** button



Delivery Options window with Receiver tab open

6) When the green circle with a check appears, your receiver has been detected.

7) Click OK



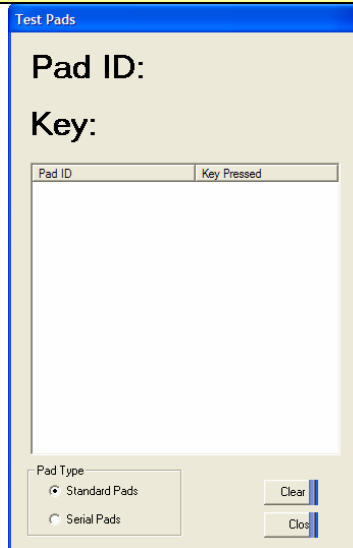
Receiver Setup window showing detected receiver

## To Test Pads

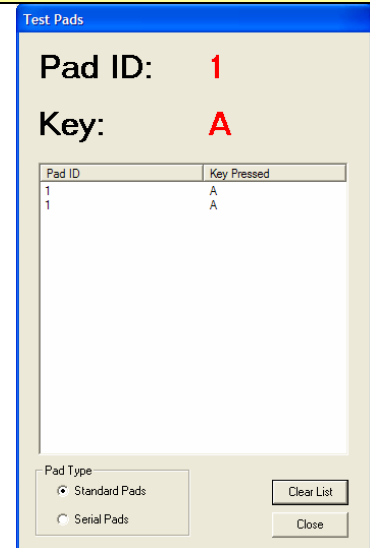
8) To test response pads click **Help** on the CPS menu bar and select **Test Pads**.

9) Under **Pad Type** click **Standard Pads**

10) Using one of your pads press a **key** and both Pad ID and Key should appear in the window



Test Pads window after clicking Pad Type



Test Pads window shows that Pad 1 works